

ACTIVATM PrestoTM

PULPDENT[®]

Universal Stackable Composite ■ Light Cure

Moisture friendly · Rubberized Resin · Radiopaque
Calcium, Phosphate and Fluoride Releasing



Cervical repair was made with Activa Presto A6 shade. Can you find it?



Severe caries restored with Activa Presto A1 and A2 shade.



Class II fractured filling replaced with Activa Presto A3 shade.



Nature's Magic in a Dental Composite

The first light cure composite designed to mimic the properties of natural teeth

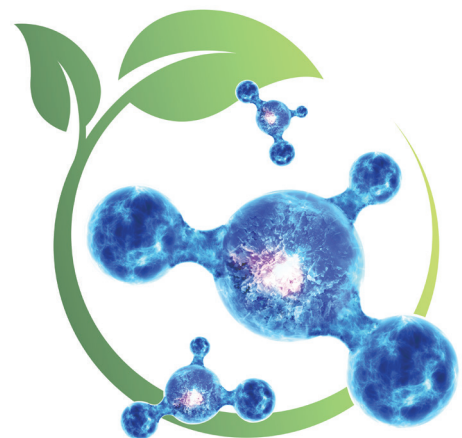
ACTIVA PRESTO is a universal, stackable, light cure composite that is strong, durable, wear and fracture resistant, releases and recharges calcium, phosphate and fluoride, and is indicated for all classes of cavities.

The Magic is in the Resin

- Highly esthetic, light cure, dentin and enamel replacement material
- Patented rubberized-resin absorbs stress and resists wear, fracture, and chipping, even in thin areas on bevel margins
- Hydrophilic resin facilitates diffusion of bioavailable calcium, phosphate and fluoride ions
- Penetrates and integrates with tooth structure for margin-free adaptation to teeth
- Contains No Bis-GMA, No Bisphenol A, No BPA derivatives

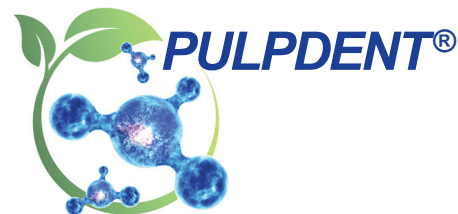
Clinical Advantages

- Unique stackable composite holds shape and does not slump for controlled placement
- Strong, tough, durable, wear and fracture resistant
- Versatile – Universal composite for all classes of cavities
- A4 and A6 shades for cervical restorations, especially useful in older patients
- Highly radiopaque (250%)
- Easy to place, easy to use 1.2mL syringes



ACTIVATM PrestoTM

Universal Stackable Composite ■ Light Cure



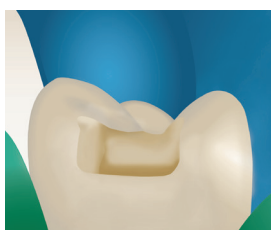
The Tooth is the Standard

Materials	Esthetic	Moisture-Friendly	High Strength	Releases Calcium, Phosphate	Shock-Absorbent
Tooth Structure	Yes	Yes	Yes	Yes	Yes
ACTIVA TM Presto TM	Yes	Yes	Yes	Yes	Yes
Composite	Yes	No	Yes	No	No

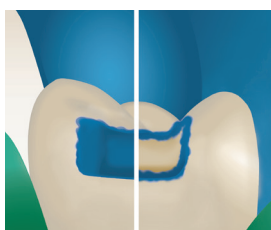
Physical Properties

- Light cure setting time: 20 ± 2 seconds
- Depth of light cure: 2.6mm
- Percentage filler by weight: 70%
- Compressive strength: 314 MPa ± 8 MPa
- Diametral tensile strength: 53 MPa ± 2 MPa
- Deflection at break 0.8mm
- Solubility: 0.08%
- Polymerization shrinkage: 2.3%
- Radiopacity: 2.5 Al (250%)

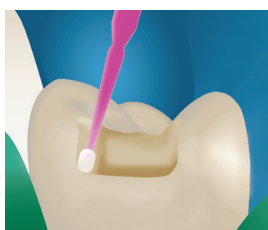
Chairside Guide



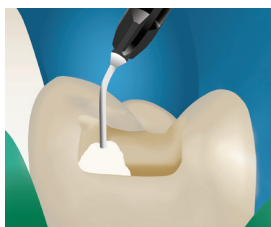
Prepare cavity
Bevel enamel margins



Total or selective etch



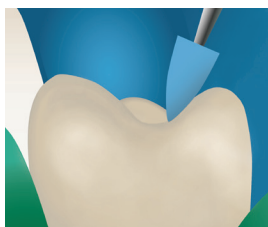
Apply bonding agent
per instructions



Place Presto in 2 mm
increments



Light cure after each layer



Finish and polish

Kit: 2 x 1.2mL/2 gm syringes
+ 20 applicator tips **\$89.99**

VPF1A1	A1 Shade
VPF1A2	A2 Shade
VPF1A3	A3 Shade
VPF1A35	A3.5 Shade
VPF1A4	A4 Shade (cervical shade)
VPF1A6	A6 Shade (cervical shade)
VPF1B1	B1 Shade
VPF1BW	Bleach White Shade

Tips: Black, 19 gauge x 1/2", Prebent tips

19K20	pkg. 20	\$5.60
19K100	pkg. 100	\$23.45