

# ACTIVA™ BioACTIVE-BASE/LINER™

*Inspired by Nature*

**PULPDENT®**



## The Future of Dentistry Now in Your Hands

### THE BIOACTIVE DIFFERENCE

ACTIVA stimulates mineral apatite formation and natural remineralization at the material-tooth interface. This process knits the restoration and the tooth together, penetrates and fills micro-gaps, reduces sensitivity, guards against secondary caries, and seals margins against microleakage and failure.

### NEW STANDARD OF CARE

ACTIVA is the first in a new generation of durable, bioactive base/liner materials that play an active role in maintaining oral health with release and recharge of significant amounts of calcium, phosphate and fluoride.

### APATITE FORMATION SEALS AND PROTECTS TEETH

ACTIVA is a "smart" material that responds to pH cycles with release and recharge of its mineral components. It stimulates formation of a protective/connective layer of mineral apatite that is the defining requirement of bioactive materials.

### DURABLE, RESILIENT, INSOLUBLE

ACTIVA is strong, durable, resists wear and chipping, and absorbs shock and stress forces like dentin. It is insoluble, will not wash out, and is tougher and more durable than traditional base/liner materials.

### YOUR PATIENTS WILL THANK YOU

ACTIVA represents a proactive approach to dentistry that anticipates future oral health needs and emphasizes prevention and long-term patient care. Be proactive. Build your practice with ACTIVA BioACTIVE products.

### PATENTED BIOACTIVE CHEMISTRY

Patented bioactive resin, patented rubberized-resin, and reactive glass fillers deliver an unparalleled combination of physical and chemical properties. ACTIVA is moisture friendly, dimensionally stable, dual cure and radiopaque.

### FAST AND EASY TO USE

Automix syringe delivery, no sensitivity, indicated for all base/liner applications under all restorative materials.

### BIOACTIVE ALTERNATIVE

ACTIVA is the bioactive alternative to traditional RMGIs, GIs and flowable composites. It provides teeth with the minerals they need to stay healthy.

### NO BISPHENOL A

ACTIVA is safe for all your patients. It contains no Bisphenol A, no Bis-GMA and no BPA derivatives.



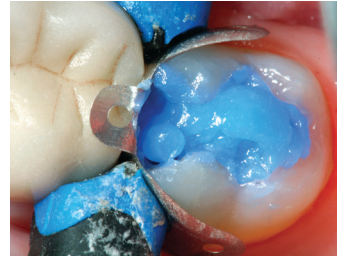
## ACTIVA BioACTIVE-BASE/LINER



1 Prepared tooth



2 Shows ACTIVA BioACTIVE-BASE/LINER after light curing



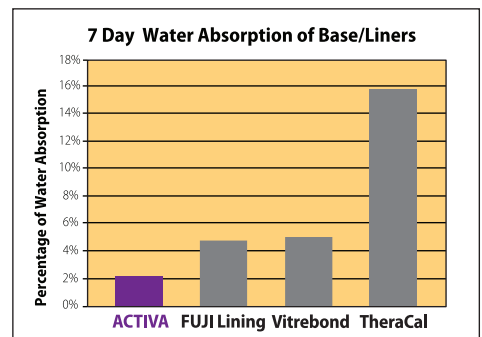
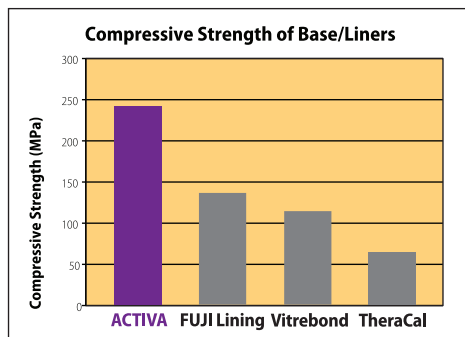
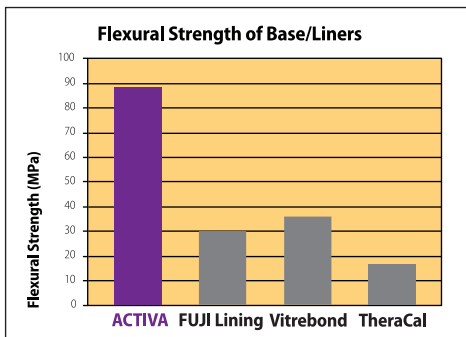
3 Etch with Etch-Rite phosphoric acid gel



4 Finish restoration using composite or ACTIVA BioACTIVE-RESTORATIVE

Photos courtesy of Dr. Robert Lowe

## ACTIVA Far Outperforms and is Easier to Use than the Leading Base/Liners



ACTIVA = Bioactive Base/Liner; Fuji Lining = RMGI; Vitrebond = RMGI; TheraCal = Resin-Modified Calcium Silicate  
Fuji Lining, Vitrebond and TheraCal are trademarks of GC, 3M and Bisco respectively.

### ACTIVA™ BioACTIVE/BASE-LINER™

ACTIVA-SPENSER™ is optional

- VB1 **Single Pack:** 5mL/7gm syringe  
+20 mix tips with bendable 20-gauge metal cannula
- VB2 **Value Pack:** 2 x 5mL/7gm syringes  
+ 40 mix tips with bendable 20-gauge metal cannula

### ACTIVA™ BioACTIVE-RESTORATIVE™

Requires ACTIVA-SPENSER™

- VR\* **Starter Kit:** 5mL/8gm syringe,  
ACTIVA-SPENSER™ + 20 assorted mix tips  
*Starter Kit available in A1, A2 and A3 shade only*
- VR1\* **Single Refill:** 5mL/8gm syringe  
+ 20 assorted mix tips
- VR2\* **Value Refill:** 2 x 5mL/8gm syringe  
+ 40 assorted mix tips  
*\*Specify Shade: A1, A2, A3, A3.5 (for A3.5)*

### ACTIVA™ KIDS, BioACTIVE-RESTORATIVE™

Requires ACTIVA-SPENSER™

- VKP **Starter Kit:** 5mL/8gm syringe Opaque White  
Shade, ACTIVA-SPENSER™, + 20 automix tips  
with bendable 20-gauge metal cannula
- VK1P **Single Refill:** 5mL/8gm syringe Opaque White  
Shade, + 20 automix tips with bendable  
20-gauge metal cannula
- VK2P **Value Refill:** 2 x 5mL/8gm syringes Opaque  
White Shade, + 40 automix tips with bendable  
20-gauge metal cannula

### ACTIVA-SPENSER™

- For 5mL 1:1 Automix Syringes
- DS05 Dispenser for 5mL automix syringe

### ACTIVA™ BioACTIVE-CEMENT™

**Single Pack:** 5mL/7gm syringe + 20 automix tips  
(15 straight black + 5 with bendable metal  
cannula)

- VC1A2 A2 Opaque  
VC1T Translucent

**Value Pack:** 2 x 5mL/7gm syringes + 40 automix  
tips (30 straight black + 10 with bendable metal  
cannula)

- VC2A2 A2 Opaque  
VC2T Translucent

### TIPS – APPLICATOR

- A20N1 Automix Tips, clear, with bendable 20-gauge  
metal cannula – pkg of 20
- A50N1 Automix Tips, clear, with bendable 20-gauge  
metal cannula – pkg of 50  
*For use with 2.5mL, 5mL and 10mL 1:1 automix  
syringes*

Contact PULPDENT or your local PULPDENT sales representative about ACTIVA™ today!